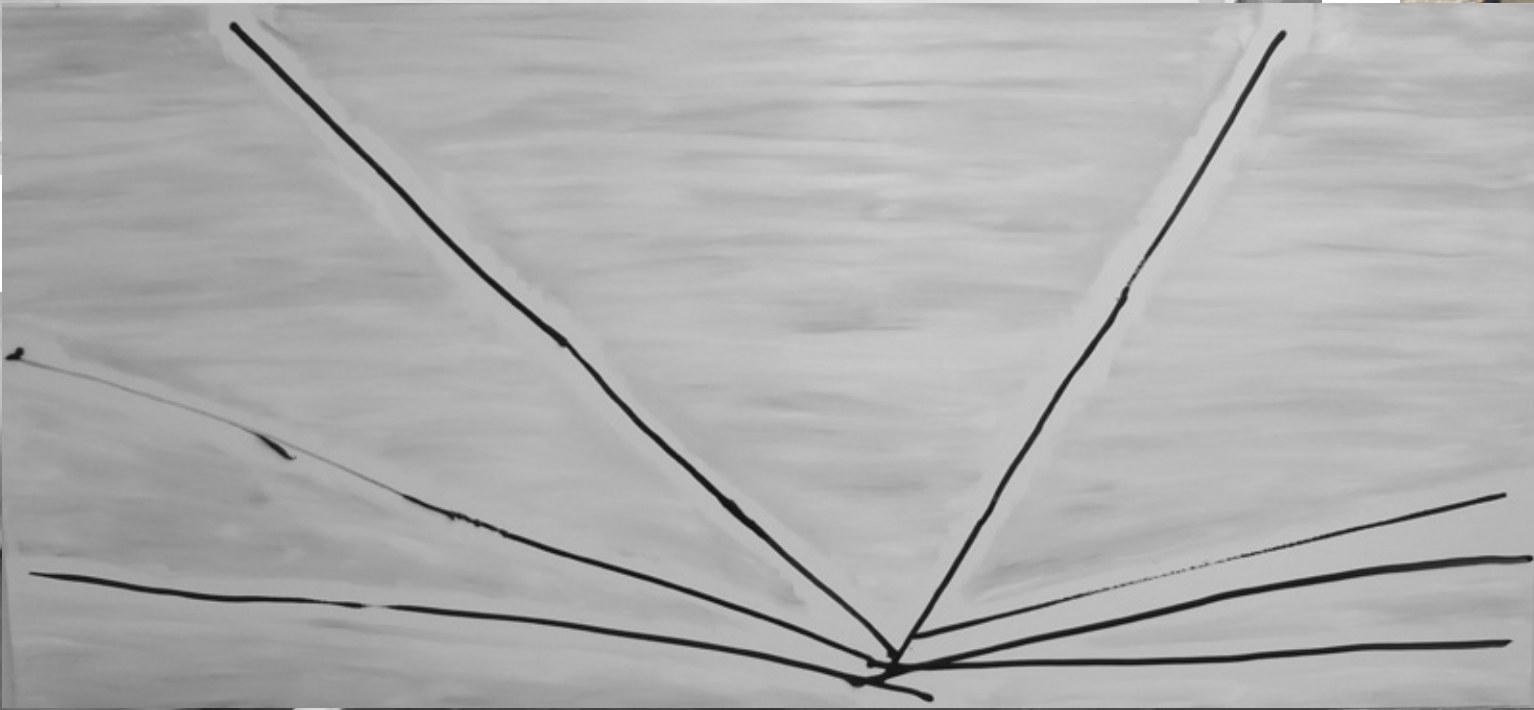


MAX RUF

PHTHALO GREEN

12 Sept – 24 Oct 2015



UNION PACIFIC, UK

STILL

An unfocused gaze held momentarily upon a discarded paper. White glossy surface yellowed under the dulled glow of street lamps, the bold graphic layout of the page is disturbed by a pockmarked texture of scratches that moves across the surface creating an almost seamless consistency with the coarse background of concrete. The top banner a grubby but intended pastel blue, bordered by a pre-generated curve, stroked with white and filled left to right by preselected purple, blue, red. Screening down a female figure in black night robe caught in mid step, left foot forward, right arm perched upwards supporting her weight on a largely scuffed out to reveal the paper stock. A white mat is thrown to the forefront with an unexplained protrusion reaching down from the corner warping its perspective, between a softly laid out bathroom textile and a graphic speech bubble.

"A warm welcome for wet feet"

AS SEEN ON TV

PAN RIGHT

AN ENHANCED ARTIFICIALITY TO THE NUMEROUS BULBS OF LIGHT GLOWING SYNTHETIC SHADES OF RED, PINK, YELLOW, BLUE. TEMPERED BY THE SCREEN, MISTY AND CONDENSED, WITH PATTERNS THAT MOMENTARILY FOCUS, FORMING SMALL INTERLOCKING ISLANDS THAT REACH OUT FROM AND BECOME SEPARATED BY CONTINENTS, TO SUBSEQUENTLY DISAPPEAR INTO THE BANAL GRADIENT OF GREY TARMAC RISING UP INTO DULL BLACK HORIZON. THE FOREGROUND IS INSISTENT, A CURVED PLASTIC BAR UNFLATTERINGLY VISIBLE, A SHADE OF YELLOW THAT GREENS AROUND THE EDGE LIKE BADLY MIXED PAINT, NONE OF THE DUSKY ROMANCE OF THE LIGHTPLAY.

Laboured frictions of surfaces clicking over rising in intensity. Shuffling. Sharp bell rings

SWEEPING PAN RIGHT

Distracted glances backwards against the sweeping pan tries to capture some detail against the fogged, uniform black texture only affording a cursory distinguishing of mass, a voluminous tower reaching upwards beyond the frame, overlooking more modest outcrops.

HIS HANDS CLASPED AROUND THE DANGLED YELLOW GRIP PULL UPWARDS BRINGING WEIGHT OFF THE FLOOR AND THE NUMEROUS TINY MIRRORS SOWN INTO HIS HAT REFLECT UNDER THE STRIP LAMP.

THE UNIFORM TEXTURE OF BLACK GREY GIVES WAY TO A SERIES OF OVERLAPPING GRIDS. INFRASTRUCTURAL BEAMS ON HORIZONTAL AND VERTICAL PLANES SUPPORTED BY SPINDLED UPRIGHTS ANCHORING HUNDREDS OF GLASS SHEETS, FORMING A MOMENTOUS CURVED WALL STRETCHING FROM THE CORNER AND BEYOND THE FRAME. LED BLUE IS RADIATED FROM WHAT COULD BE AN ENLARGED PEG BOARD, AN

(CONTINUED)

CONTINUED:

2.

AMATEUR ELECTRONICS SIGNAGE OR CRAFTWORK WITHOUT THE RESOLUTION FOR A SEAMLESS DIGITAL IMAGE, ONLY CAPABLE OF ATOMISED SHAPES WHICH FORM AT A DISTANCE FROM THE EYE. ALL THE HOLES HAVE SIMPLY BEEN PLUGGED AS AN EXTERIOR DESIGN.

ZOOM

(The tops of the bollards are either miniaturised crowns or inflated lemon juicers. The former would be continuous with the obelisk like base and decorative stars, rendered in the same utilitarian shades as the road surface marks, a kind of tragicomic embodiment of sovereignty through street furniture. Somehow they are more convincing as lemon juicers though, bloated and weighted through a brute casting that eschews light touch and precision of manufacture)

CUT

Foregrounded and encased, precise intersections of lines visualise routes, distances, locations, their relationships along a broad vertical trajectory for ease of use rather than accuracy.

SCANNING UPWARDS, SQUINTING SLIGHTLY

Luton Airport Pkwy - 05:09 On time

Mill Hill Bway - 05:09 On time

Oxford 3 05:24 On time

"The driver's only just turned up. He needs to taxi in from Smithfields. Have you got a flight to catch? 07:30? You'll be alright. Then they leave it to frontline staff to take the shit, I just tell them, don't tell me, what I meant to do about it? Tell the fucking driver, know what I mean. They always say 'Oh he'll be there early'"

OUTWARD SIGHS EXHALED BY ALL.

(Leaned, propped, slumped against various convenient architectural features. The feeling is one of wanting to

(CONTINUED)

CONTINUED:

3.

*share but being caught
between weariness,
alertness, anxiety, boredom,
indifference and
inevitability, such that its
easier to stay solitary,
keep scanning for
information you already
searched for and registered
before you left)*

CUT

FURTHER GRIDDING OPPOSES TEXTURED PANELS

SCANNING DOWNWARDS

Perforated and breathable, border broken by the extruding flatscreen casing, casting a shadow which diffuses into a marbled texture of stone that might be Castle Travertine Chocolate (L)450mm x (W)450mm¹ cut to rectangular sections descending beyond the bottom of the frame. Further grids are layered within the frame from a backdrop of pleated solar panels overlayed with no transparency by annotation, EXCEL green infomercial bar charts and crudely aligned clipart.

'The total electrical energy
generated this week is enough to:
toast 190426.9 slices of toast'

'The total electrical energy
generated this week is enough to:
roast 927.7 roast dinners'

'The total electrical energy
generated this week is enough to:
boil 77310.8 cups of tea'

'The total electrical energy
generated this week is enough to:
wash 1947357.2 dishwasher loads'

'The total electrical energy
generated this week is enough to:
iron 45702.5 shirts'

CUT

3 shades of green competing for your attention in trying to be of assistance. Flashing LED green that doesn't quite resemble a shade rather than light focused dispersing colour outwards - mechanism is working. Flat industrial green inset by an excessively big button more like a clowning prop or party badge - Emergency Push. 'High Strung' Sherwin-Williams, 'spilled out of the 1970's, pasted on by a round sticker

'Talk to us, We're here to help'

1. http://www.diy.com/departments/castle-travertine-chocolate-ceramic-wall-floor-tile-pack-of-5-1450mm-w450mm/145673_BQ.prd

(CONTINUED)

CONTINUED:

4.

*(The boredom and weariness
has really given way by this
point where you begin to
take note of the restless
standing and sitting of
bodies around you. The
anxiety is shared, almost.
You've focused
disinterestedly at the
digital information boards
trying to summon up clever
metaphors for what the
unintentionally uneven
purple gradient might be
symptomatic of. You've
stared lazily at the
cleaning trough, perfectly
positioned on the floor
between two tubular
architectural barriers, with
long wooden handles
similarly symmetrically
upright and parallel,
wondering if this was
assembled. But all you know
is that the Sevenoaks train
is in 32 minutes and it's
not your one)*

CUT

"Taken from a series of high vantage points...each panoramic picture is made by combining up to a hundred separate images to create a final image with exceptional detail and clarity to catch the mood and flavour of these startling vistas."

The height is improbable. It falls short of a birds eye perspective; too withdrawn from the ground for film or television; too elevated for capturing a horizon. It must be the 'assisted realism' of tourist postcards², a perspective that tries to simultaneously immerse you in the fantasy whilst making the wider horizon of possibilities available to the eye. It's not exotic enough, with the sweeping track of muddy water very stingily broken from the expanding subdivisions of muggy blotches by single files of green caricature mounds of modelled vegetation.

PULL BACK AND TRACK RIGHT

High pitched ringing cuts through murmured conversation, live voice hindered by door and through radio

2. <http://www.guggenheim.org/new-york/collections/collection-online/artwork/5433>

(CONTINUED)

CONTINUED:

5.

Looking outwards the dulled strip lighting can only illuminate a confusion of inside and out. Vaguely figurative suggestions are filled by a beaded texture, projected weakly onto a grid of 2 x 4 black stroked squares almost reading like frames of a motion study with figures taking successive positions until the left corner reveals a surprisingly deft lurch forward, half pirouette and exit.

TRACK RIGHT

Inside and outside begin to form definite boundaries, less confusion and more double exposure. The beaded texture crystallizes into a textile motif that is still rather oblique, struck through by brick sprayed with letterform and intermittent shades of green. The top of the frame has introduced a global light evenly distributed replacing the intense glares or relegating them to passing incisions. Angled infrastructures cut, intersect, frame, pole, beam, brick across the middle band of the image in a play between foreground and horizon that continually cuts attention entirely to black.

LABOURED PAN DOWN

accompanied by sliding of polyester, nylon, vinyl in a rustled cut resting unfocused on black reflection trawled by thumbnails, mechanic and pictographic. Boundaries have given way

A SIMPLE VIEW OF TREES, FIELDS, LIGHT INDUSTRIAL BUILDINGS, WITH THE FIELDS INTERSECTING WITH FENCES AND ROADS, EXACTLY WHAT YOU WOULD EXPECT TO FIND SOMEWHERE BETWEEN ST ALBANS CITY AND HARPENDEN.

THE TRACKSIDE OBSCURES YOUR VIEW
(You can't really see
anything until you go on the
free wifi and find that the
closest point you can reach
is under the bridge next to
Harpenden car park. A rusted
lattice work of crumbling
Buckingham Green³ metal slats
reinforces the concrete
weight. The surrounding
walls still have some rare
pockets of the original
ebullient Langwith Red
Rustic Brick⁴ but its
primarily chipped, faded,
snagged, caked to a
flattened dusk of exhaust)

DRAW LEFT 3 CLICKS

"Green Lights All the Way"

STUNNING WIDE ANGLE SWEEPING ACROSS DENSE PINE OUTCROPS

3. <http://www.hansonbuildingproducts.co.uk/bricks/brick-selector>
4. http://www.hammerite.co.uk/products/garage_door_paint.jsp

(CONTINUED)

CONTINUED:

6.

CAUGHT ALMOST IN SILHOUETTE AGAINST THE SUN RAYS STRIKING 'THE CLOUDS, "THE CHIEF ORGAN OF SENTIMENT", WHOSE SHAPES MATERIALIZE WITHOUT RESOLVING INTO PATTERNS OR FIXED FORMS'⁵.

YOUR EYES CONTINUE TO SCAN

Within the allowed perimeter of the next click the landscape is literally torn from within, the soiled grey pasted undersides of print flayed outwards to reveal from the bottom of the thigh down, a leg, rolled up denims to knee and a red converse shoe treading on a perfectly masked square of lawn, frayed grassy edges immaculately cut with blades of shadow.

JOLT UPWARDS

Neon green rings rendered with full lighting and volume chain together from a single disc to form the cheering face of a fattened pig emblazoned upon the night sky
"Percy Pigs

Road hogs, but in

a good way"

ACCIDENTAL SWIPE OF THE TRACKPAD

GALVANIZED STEEL POLE CUTS SCREEN THROUGH THE MIDDLE OF THE DENSE LEAVES OVERLAPPING HUES OF LEAFY GREEN TO HARVEST GOLD SCORED BY INTERSECTING BRANCHES, PUSHED UP AS A SINGLE SURFACE TO THE FACE OF THE SCREEN, BOUNDED BY A SEMI-TRANSPARENT WHITE FRAME,

FOLLOWING THE CURSOR AS IT PULLS LEFT

shifting in scale and wrapping to perspectival planes inconsistently correlating to depicted volumes within the image. The secure bike shed is the limit of this search.

CUT

SMOOTH TRACK DOWNWARDS

JOLTY TRAILING OF BALSAM BAG, DOUBLED AND MIRRORED IN THE COTTON JACKET.

At each stage of descent a small window opens up to frame

PERFECTLY BALANCED ROWS OF ORANGES STACKED HORIZONTALLY AND PYRAMIDALLY, IN ROWS FILLED UP TO THE NECK REVEALING A VENDORS HEAD WITH WHITE HAT. A JIGSAW OF DISTINCT FIELDS CUT BY 2 SWEEPING TARMAC TRACKS AND AN EQUATOR. MIDNIGHT BLUES GRADED LIKE WHISTLER'S THAMES BUT ILLUMINATED BY INVASIVE SEARCH LIGHTS.

JOLTY TRAILING

5. Laura Cumming's description of John Constable Study of Clouds (1822) Ashmolean Museum, Oxford, for Guardian article 'The 10 best...skies in art: From sunrise to starry, starry nights, the most heavenly depictions of the sky' Sunday 11 March 2012 00.04 GMT.

(CONTINUED)

CONTINUED:

7.

CLEAN REFLECTIVE SYNTHETIC FABRICS

FADE TO BLACK

There's a large elliptical cut out of Peter Capaldi's torso, stroked with a few points of purple, revealing an interior of luridly coloured semi transparent innards that could be bodily if they weren't so uniformly spherical. A purple hue continues to run steadily through his suited body, running effortlessly through the diagrammatic cog wheels onto comical light rays emanating outward at regular intervals, into discs of candy, diffusing gently into an almost imperceptible reflection off the dappled white tiles

*(Your eyes have to look down
as to not attract too much
attention as there are
limited excuses for openly
recording seemingly
arbitrary details in such a
surrounding)*

PAN FORWARDS FACE DOWN

There are flickered suggestions of difference en route but most of the fixtures are purple, just purple. Well some isn't actually purple but for the sake of this lets call it purple. Various shades, hues, codes, opacities, intensities, absorptions, embodied in different materials, embossed by precise surfaces, distributed through pattern, characterised in motifs etc. Much of it isn't purple. But it's essentially purple. With different adjectives

Light; Caution; Beyond; Village;
Walls; Urban; Plus; Bleep Bleep;
Refreshing; Fizzy; Mix

PAUSE

PAN LEFT

WIDE ANGLE CAPTURES FROM TOP A HAZY LIGHT GRADED THROUGH PASTEL TO ASPHALT BROKEN BY SOFT INDISTINCT WAVES THEN CUT BY HORIZONTAL PLANES OF MASS, BEAM AND FLATTENED LINE.

*(Finally you can actually
look out unhindered except
for the occasional grain of
the glass window pain. You
are at a height where you
see an expanse but retain
the scale of bodies in
relation to the
heterogeneous engineerings
that both connect
purposefully whilst in other
instances remain scattered
and isolated. The space is
awash with movements;*

(CONTINUED)

CONTINUED:

8.

*operational, directed,
angled, targeted. Even
liming⁶ bodies are only
seemingly so, on call,
dressed in high visibility
and framed in logistical
dioramas)*

INADVERTENT PAN DOWN

There is a frame where the vacuum formed curvature and recess of the lid, fitted plug and spherical tab, debossed motifs and warning sign vectors, wrapped corrugated sleeve form continuous lines of engineering, bridging the inside and outside.

SLOW TRACK RIGHT

"Stories of the street portray
unique narratives as seen through
the eyes of international
photographers"

YOUNG WOMEN'S LEG IN BLACK TIGHTS FRAMED AGAINST DENSE
COLLAGE OF FLYPOSTERS

YOUNG MAN'S HAND GRASPING TABLET PRECISELY CUT TO ALLOW
ACCESS TO PADLOCKED METAL ELECTRICAL SOCKET TERMINAL

MANICURED HAND HOLDS COIN ENGRAVED WITH LAKE SCENE BETWEEN
TWO RED POLISHED FINGERS

PAN FORWARDS FACE DOWN

The grain of Bandura Bologna Oak⁷ is marshalled in comfortable vertical widths giving a natural direction to follow. Sequences of pipings, Footwear, bags adjusted to movements, navigating retractable barrier posts and safety clutch systems. The free newspaper awkwardly held between bag, under arm, in hand with phone, ticket and passport opened to photo page, keeps jutting in to the view, increasingly so as it descends from it's precise folding without even being opened.

CUT

EVERY TICKET WINS £1,000 IN GU12 4EX, HA8 5BD, IP5 1EP,
NR1 2HZ, TW14 8NA

TURN

SAMUEL RAE COMPLETES A LIFESTYLE SURVEY AND FAILS TO TICK
'DO NOT SHARE MY DETAILS' BOX

CUT

*(Fresh air rushes in.
Following parquet bricks, a
seemingly infinite*

6. 'Liming' is a Trinidadian word that "means, roughly 'hanging around'" but is also governed by specific social and cultural rules and practices. (CONTINUED)
7. http://www.trade-point.co.uk/tp18s_l3_laminate-flooring/colours-bandura-bologna-oak-effect-laminate-flooring-225m/266086_TP.prd

*permutation of arrangements
by shade, wear and grain,
you are in the elements and
the structure is a
provisional shield for the
transition. It's a lower
league stadium dugout that
doesn't really protect you
from rain but locates you
just closer to the action
than crowd. Maybe its
actually the same company.
There is no temporary
enclosure, with its own
floating atmosphere encased
by suspension and concertina
fixtures. There are no
glossed, contemporary
photographic portraits
investigating cultural
difference.⁸ Brick gives way
to frequently repaired,
aggregate heavy concrete
mixes, stroked by clean
white and yellow, slightly
browning tread plates,
rivets, hinges, rigs and
steps that you begin to
ascend.)*

"Step up to lounge luxury"

CUT

Unrelenting sound of extraction.

CRYING BABY

The porthole is entirely fogged with light and only very
tenuous differences of opacity become visible, less to do
with the actual outside and more the adjustment of the
eye. Its uniform, dingy cavernous, with surfaces
immediately pushed against you, although occasionally
stoked by light as if through blinds, evoking Eric Fischl
for probably less than a second. Panning across a bright
shoulder is cut between the seats and some depth is
registered, the texture and pattern is something like an
inverse Peterborough United (away) 1993-4 or a highly
saturated Norwich City (home) 1992-3.⁹

PAN DOWN

Past three marks that could only be described as gouges,
proceeding down further along soft purple striped folds,
meshed netting holding laminated card, reaching a crumpled
apex between two stone washed legs.

(CONTINUED)

8. <http://thefinancialbrand.com/6361/hbsc-brand/>
9. <http://www.buzzfeed.com/davidcolby/28-terrible-football-kits-that-are-best-left-in-th-au9n>

DESCENDING BETWEEN THEM, ACCELERATING AND PAUSING

Hovering over criss crossed lines, stitching together
familiar cut shapes of leather that are only conspicuously
absent of any other marking.

A NONDESCRIPT PAIR OF TRAINERS
*(It becomes impossible to
focus on anything but the
comical loop of lace,
oversized and strikingly in
focus, from this angle
centred whilst the typically
irritating knotty centre is
somehow concealed. It's so
big it droops all the way
over the curve of the foot
to the base of the sole,
almost a decorative feature
in place of the hang tag)*

FASTEN

The dull lighting dims to almost complete shade allowing
hazy forms to emerge overexposed through the porthole

CRANING OVER

It's impossible to register a stable viewpoint. The glare
is permeated by saturated greens burned to orange exceeded
by bright white. The focus is increasingly lost and
regained, a flickering of shape, hue and motion,
continually altered, adjusted and replenished. The only
consistency being the horizontal plane we track past until
this is lost to an indistinguishable fog and increasing
vibrations.

CUT

STABILIZE

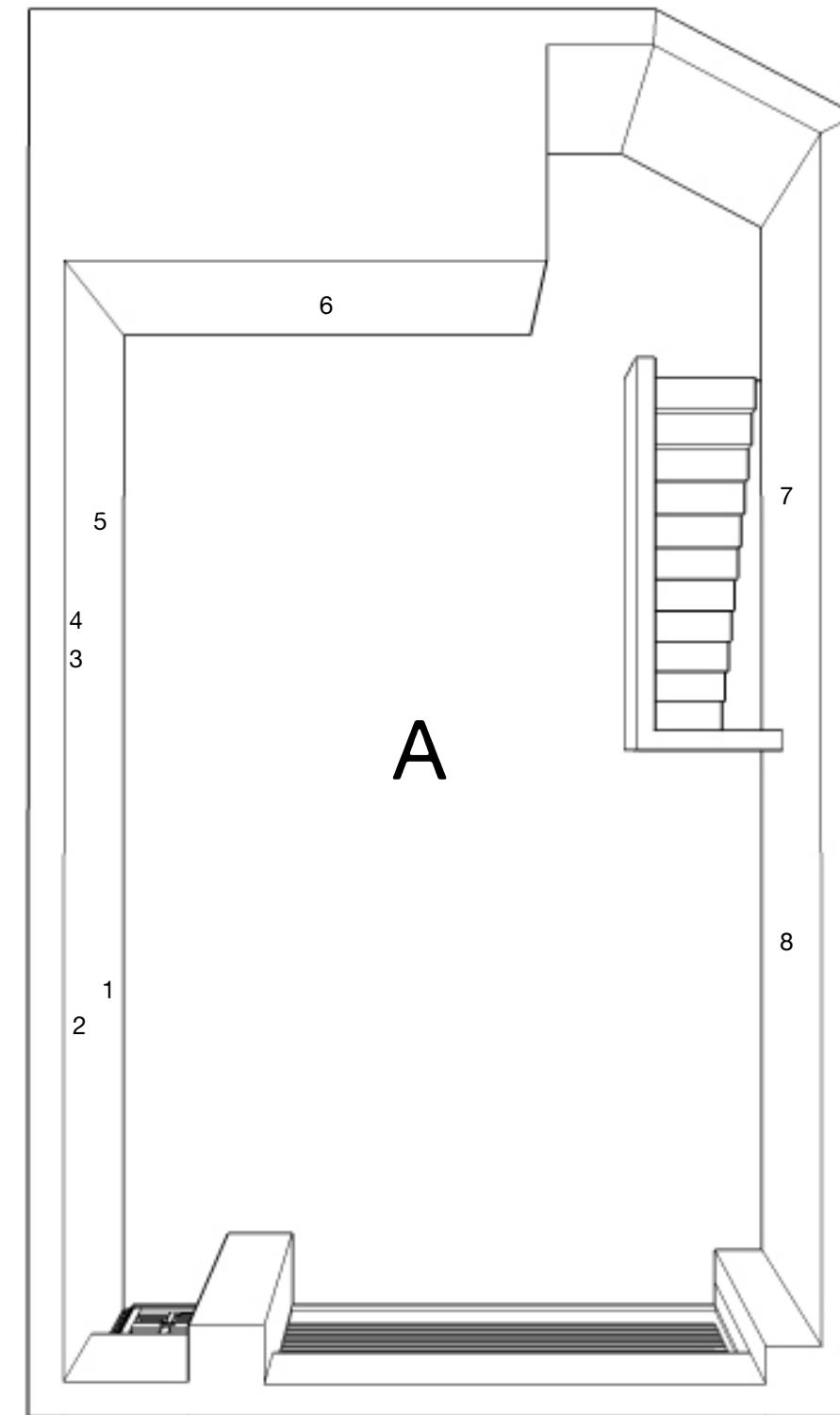
PANNING FURTHER ACROSS GREY SEAMLESSLY TRANSITIONS

ATTEMPTING TO POSITION

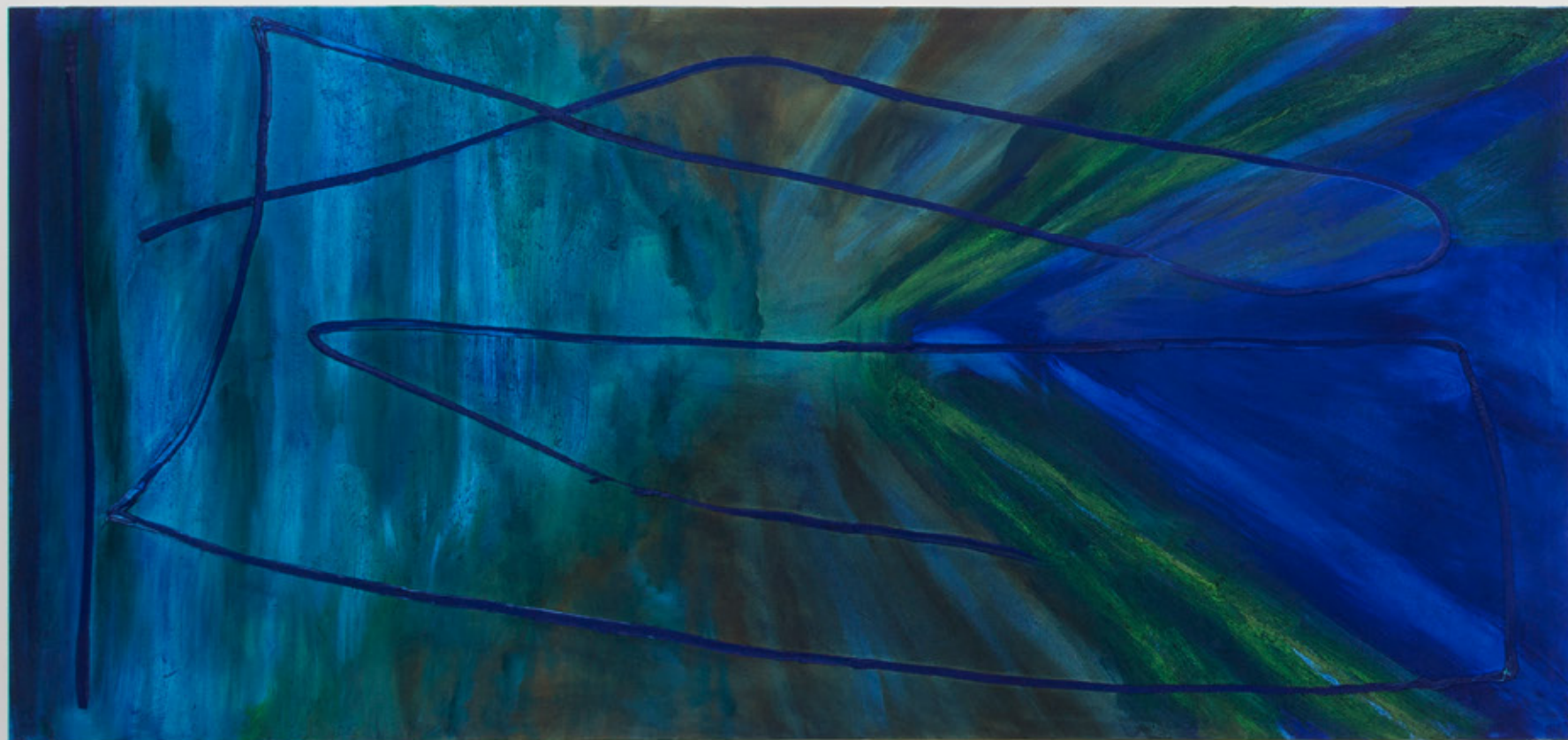
Shuffled materials, unstretched, unclicks and increasingly
audible voice exchanges.

This text was published on the occasion of the exhibition Phthalo Green, at Union Pacific, London,
following conversations between Max Ruf and Ali Eisa, and in response to the authors travel
between Wandsworth Road, London and Vilnius International Airport, Lithuania.

Ali Eisa is an artist living and working in London. He also works collaboratively as half of Lloyd
Corporation.



- 1 untitled (multicoloured background, blue, blue lines), 2015
oil on canvas
300 x 140 cm
- 2 untitled (prussian blue lines, white background), 2015
oil on canvas, 2 parts
240 x 80 cm
- 3 untitled (etching of square, branches), 2015
picture books, aluminium frame
100 x 70 cm
- 4 untitled (house, carafe), 2015
picture books, aluminium frame
100 x 70 cm
- 5 untitled (monument I), 2015
oil on canvas
300 x 140 cm
- 6 untitled (black lines, phthalo green, white fields), 2015
oil on canvas
300 x 140 cm
- 7 untitled (dark background, blue fields, red lines, white), 2015
oil on canvas
300 x 140 cm
- 8 untitled (phthalo green, blue lines, two fields, orange), 2015
oil on canvas
300 x 140 cm



TOP: *Untitled (prussian blue lines, white background)*, 2015, oil on canvas, 2 parts, 240 × 80 cm;
Untitled (etching of square, branches), 2015, picture books, aluminium frame, 100 × 70 cm;
Untitled (house, carafe), 2015, picture books, aluminium frame, 100 × 70 cm

BOTTOM: *Untitled (multicoloured background, blue, blue lines)*, 2015, oil on canvas, 300 × 140 cm;
Untitled (monument I), 2015, oil on canvas, 300 × 140 cm;



TOP: *Untitled (prussian blue lines, white background)*, 2015, oil on canvas, 2 parts, 240 × 80 cm;
Untitled (etching of square, branches), 2015, picture books, aluminium frame, 100 × 70 cm;
Untitled (house, carafe), 2015, picture books, aluminium frame, 100 × 70 cm

BOTTOM: *Untitled (multicoloured background, blue, blue lines)*, 2015, oil on canvas, 300 × 140 cm;
Untitled (monument I), 2015, oil on canvas, 300 × 140 cm;
Untitled (black lines, phthalo green, white fields), 2015, oil on canvas, 300 × 140 cm;



Untitled (monument I), 2015, oil on canvas, 300 × 140 cm;

Untitled (black lines, phthalo green, white fields), 2015, oil on canvas, 300 × 140 cm;

Untitled (dark background, blue fields, red lines, white), 2015, oil on canvas, 300 × 140 cm;

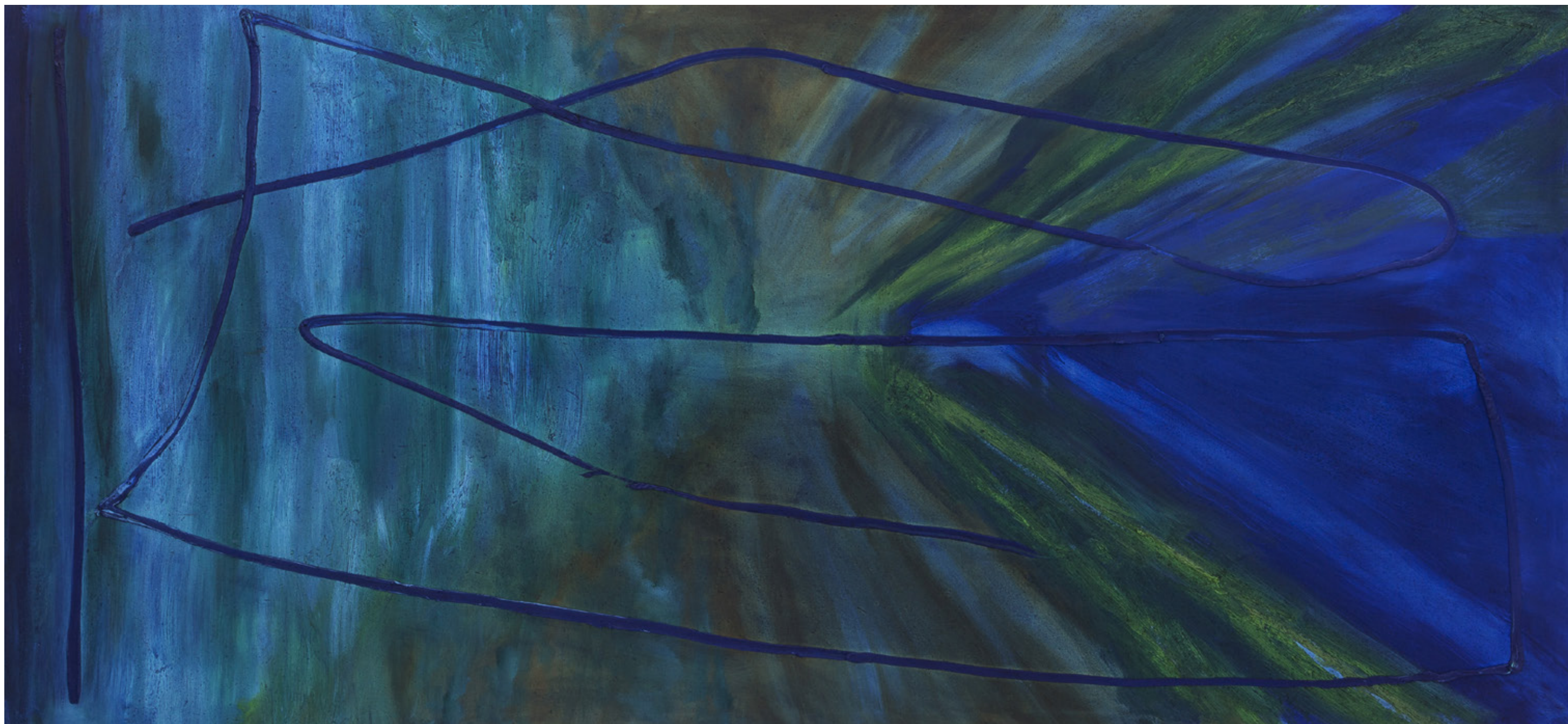


Untitled (dark background, blue fields, red lines, white), 2015, oil on canvas, 300 × 140 cm;



Untitled (dark background, blue fields, red lines, white), 2015, oil on canvas, 300 × 140 cm;
Untitled (phthalo green, blue lines, two fields, orange), 2015, oil on canvas, 300 × 140 cm





Untitled (multicoloured background, blue, blue lines), 2015, oil on canvas, 300 × 140 cm



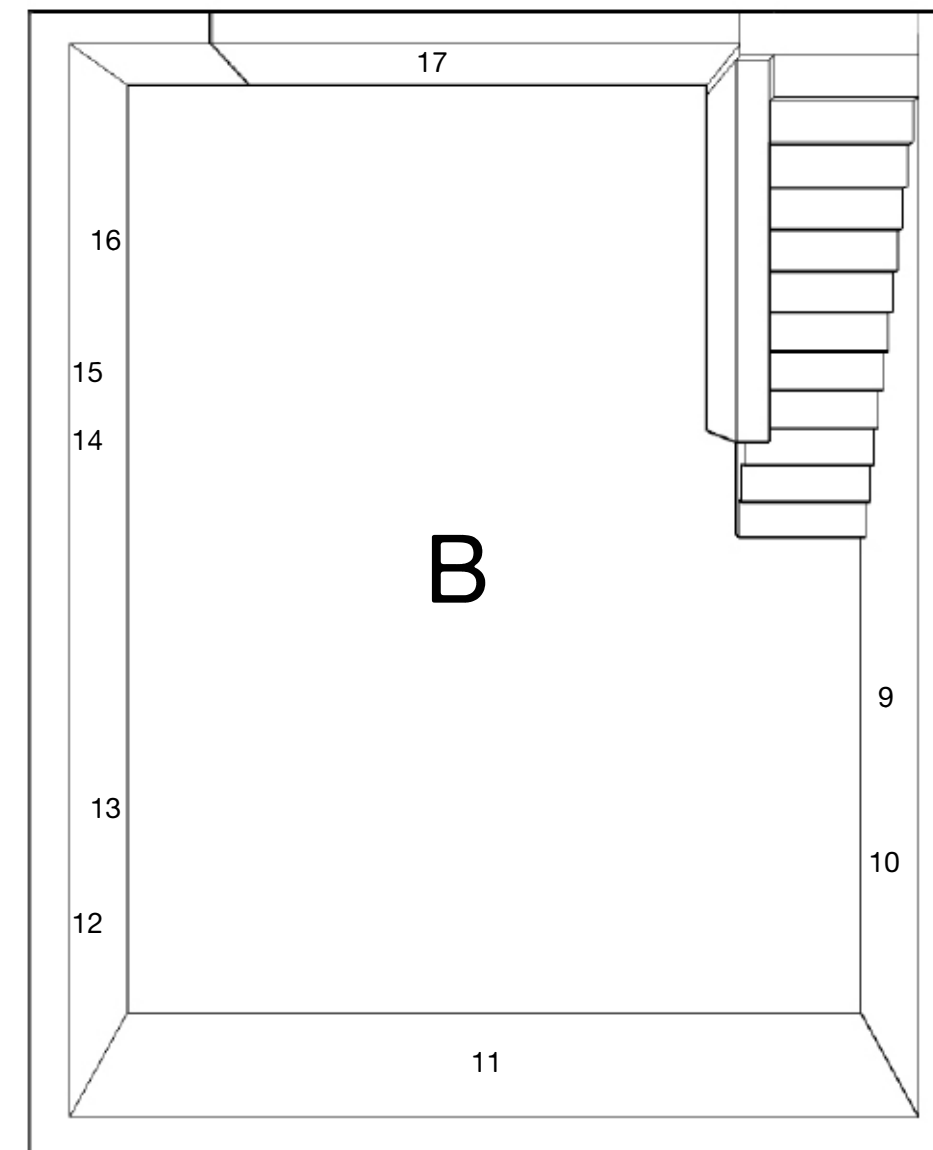
Untitled (monument I), 2015, oil on canvas, 300 × 140 cm



Untitled (phthalo green, blue lines, two fields, orange), 2015, oil on canvas, 300 × 140 cm



Untitled (prussian blue lines, white background), 2015, oil on canvas, 2 parts, 240 × 80 cm



- 9 untitled (grey, red, phthalo green fields), 2015
oil on canvas
150 x 100 cm
- 10 untitled (black lines, red lines, green fields, prussian blue background, white), 2014
oil on canvas
150 x 100 cm
- 11 untitled (yellow lines, blue fields, green), 2015
oil on canvas
300 x 140 cm
- 12 untitled (prussian blue lines, white background), 2015
oil on canvas, 2 parts
240 x 80 cm
- 13 untitled (blue line, white background, indian red), 2015
oil on canvas
300 x 140 cm
- 14 untitled (apples, fields), 2015
picture books, aluminium frame
100 x 70 cm
- 15 untitled (figure), 2015
picture book, aluminium frame
100 x 70 cm
- 16 untitled (phthalo green line, phthalo green field), 2015
oil on canvas
135 x 246 cm
- 17 untitled (phthalo green line, phthalo green field), 2015
oil on canvas
135 x 246 cm



TOP: *Untitled (prussian blue lines, white background)*, 2015, oil on canvas, 2 parts, 240 × 80 cm;
Untitled (apples, fields), 2015, picture books, aluminium frame, 100 × 70 cm;
Untitled (figure), 2015, picture book, aluminium frame, 100 × 70 cm

BOTTOM: *Untitled (blue line, white background, indian red)*, 2015, oil on canvas, 300 × 140 cm
 VERTICAL: *Untitled (phthalo green line, phthalo green field)*, 2015, oil on canvas, 135 × 246 cm



Untitled (phthalo green line, phthalo green field), 2015, oil on canvas, 135 × 246 cm;

Untitled (phthalo green line, phthalo green field), 2015, oil on canvas, 135 × 246 cm;

Untitled (grey, red, phthalo, green fields), 2015, oil on canvas, 150 × 100 cm;



Untitled (grey, red, phthalo, green fields), 2015, oil on canvas, 150 × 100 cm



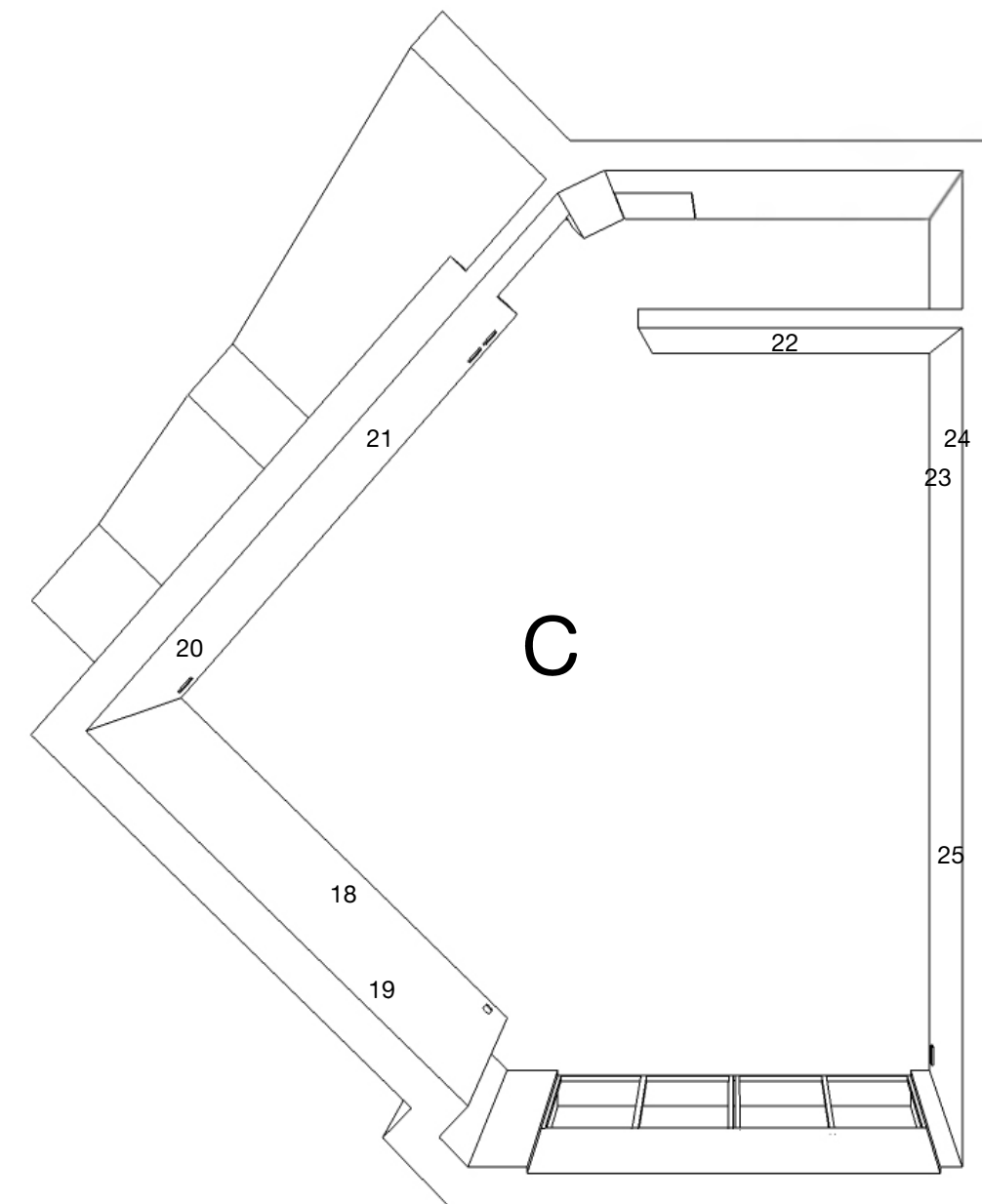
Untitled (black lines, red lines, green fields, prussian blue background, white), 2014, oil on canvas, 150 × 100 cm



Untitled (blue line, white background, indian red), 2015, oil on canvas, 300 × 140 cm



BOTH: *Untitled (phthalo green line, phthalo green field)*, 2015, oil on canvas, 135 × 246 cm



- 18 untitled (prussian blue, light blue fields, red line), 2015
oil on canvas
300 x 140 cm
- 19 untitled (prussian blue lines, white background), 2 parts, 2015
oil on canvas
240 x 80 cm
- 20 untitled (timber fallers, fountain), 2015
picture books, aluminium frame
100 x 70 cm
- 21 untitled (monument II), 2015
oil on canvas
300 x 140 cm
- 22 untitled (house with walkway, window), 2015
picture books, aluminium frame
100 x 70 cm
- 23 untitled (prussian blue, blues, greens, three gray fields), 2015
oil on canvas
300 x 140 cm
- 24 untitled (prussian blue lines, gradient), 2014
oil on canvas
120 x 80 cm
- 25 untitled, (grey shades, green fields, blue line), 2015
oil on canvas
300 x 140 cm



Untitled (prussian blue lines, white background), 2015, oil on canvas, 2 parts, 240 × 80 cm;

Untitled (prussian blue, light blue fields, red line), 2015, oil on canvas, 300 × 140 cm;

Untitled (timber fallers, fountain), 2015, picture books, aluminium frame, 100 × 70 cm;



Untitled (house with walkway, window), 2015, picture books, aluminium frame, 100 × 70 cm;

Untitled (monument II), 2015, oil on canvas, 300 × 140 cm;

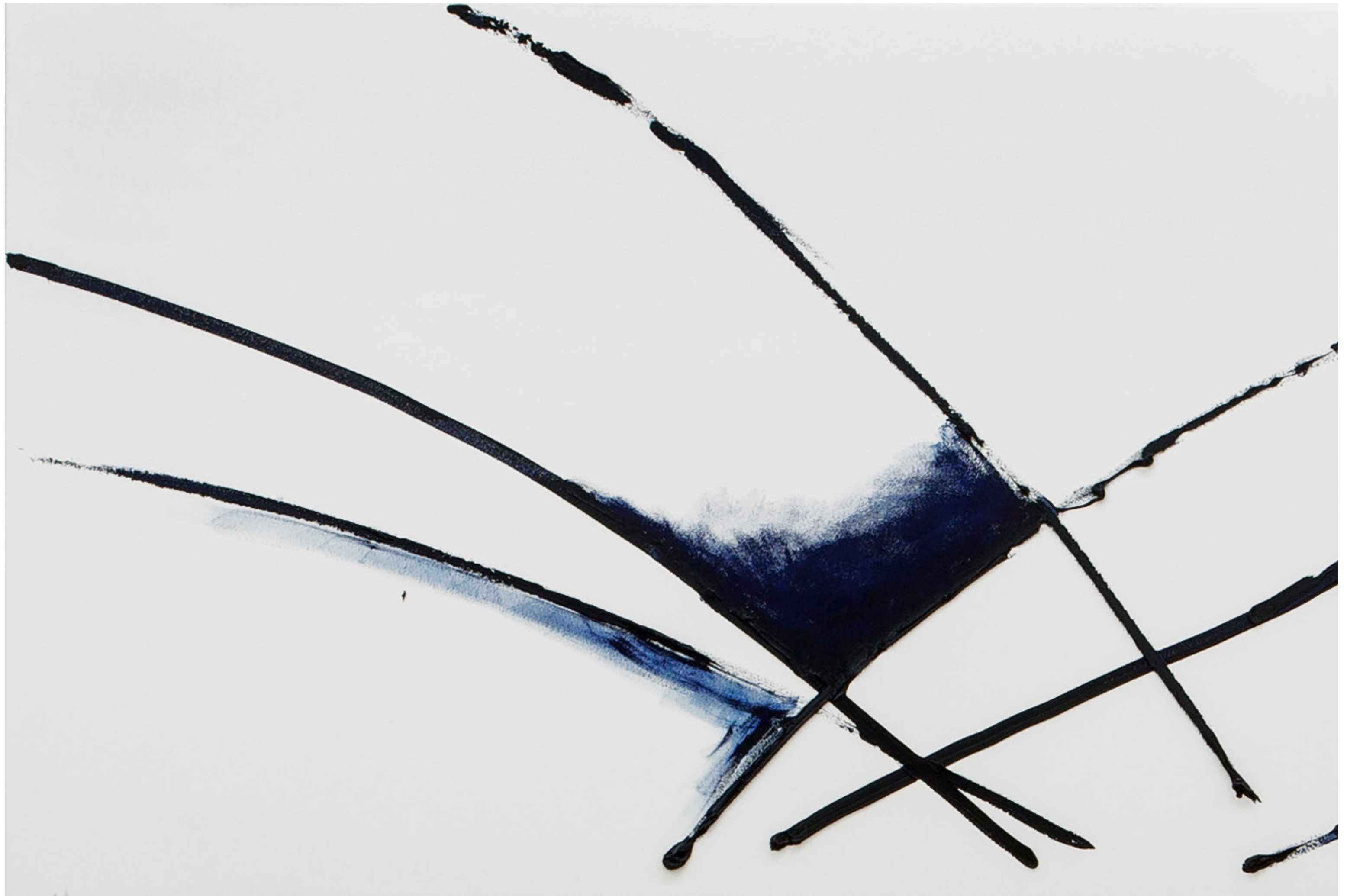


Untitled (timber fallers, fountain), 2015, picture books, aluminium frame, 100 × 70 cm;



BOTTOM: *Untitled (timber fallers, fountain)*, 2015, picture books, aluminium frame, 100 × 70 cm;
Untitled (prussian blue, blues, greens, three gray fields), 2015, oil on canvas, 300 × 140 cm

TOP: *Untitled (prussian blue lines, gradient)*, 2015, oil on canvas, 120 × 80 cm
 VERTICAL: *Untitled (grey shades, green fields)*, 2015, oil on canvas, 300 × 140 cm



Untitled (prussian blue lines, gradient), 2015, oil on canvas, 120 × 80 cm



Untitled (monument II), 2015, oil on canvas, 300 × 140 cm ;

Untitled (timber fallers, fountain), 2015, picture books, aluminium frame, 100 × 70 cm



Untitled (house with walkway, window), 2015, picture books, aluminium frame, 100 × 70 cm;
Untitled (grey shades, green fields), 2015, oil on canvas, 300 × 140 cm

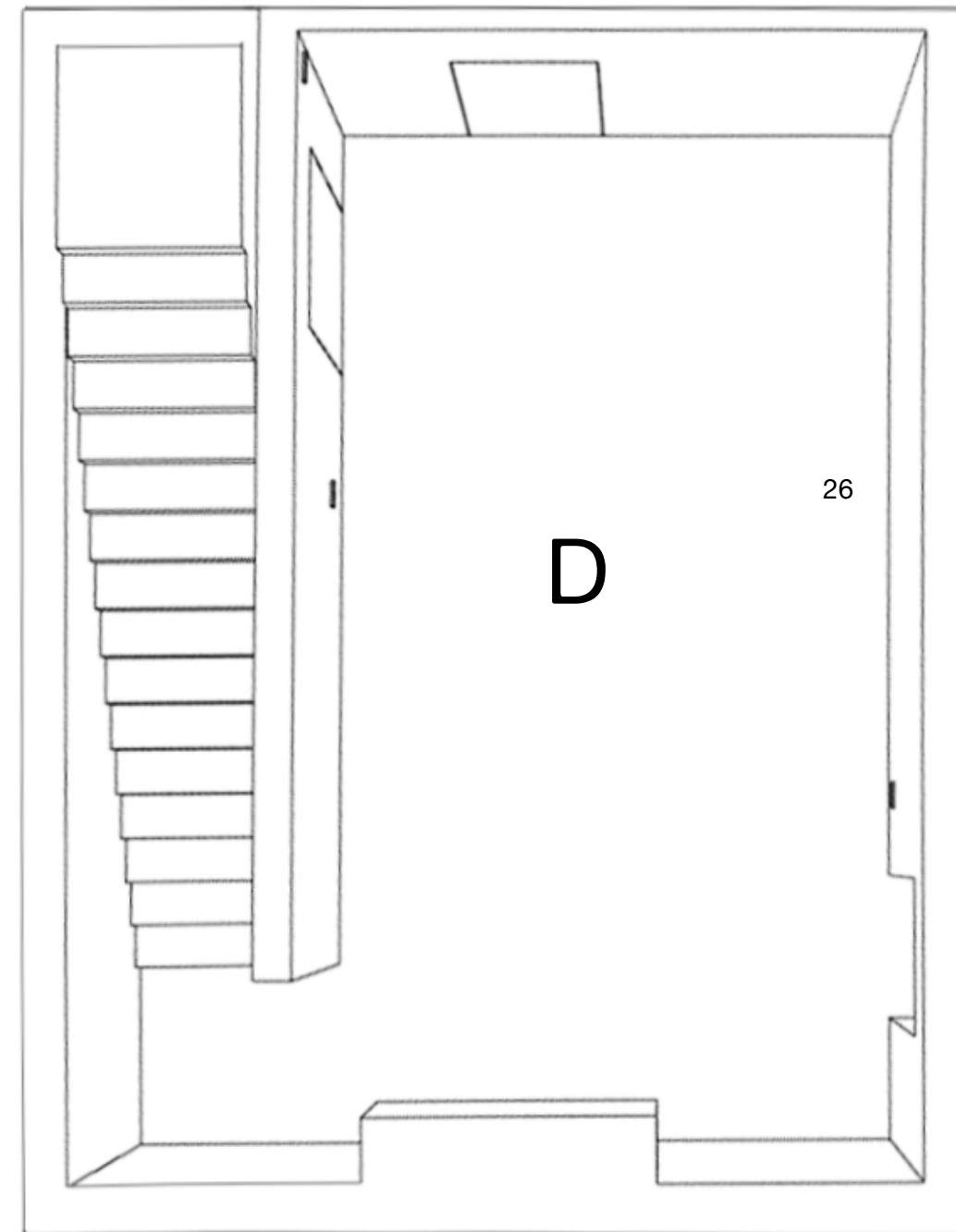




Untitled (prussian blue, blues, greens, three gray fields), 2015, oil on canvas, 300 × 140 cm



Untitled (prussian blue, light blue fields, red line), 2015, oil on canvas, 300 × 140 cm



26 Haus 8, 2015
video projection with
sound
10.18 min, looped











©

London/Berlin 2015

Max Ruf

&

Union Pacific